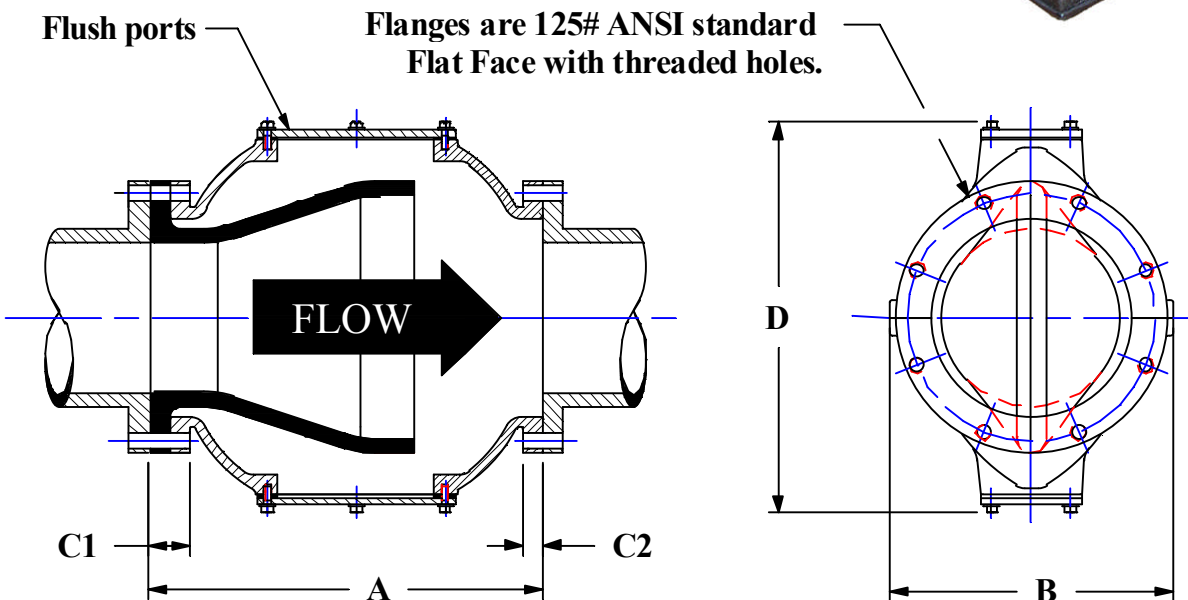
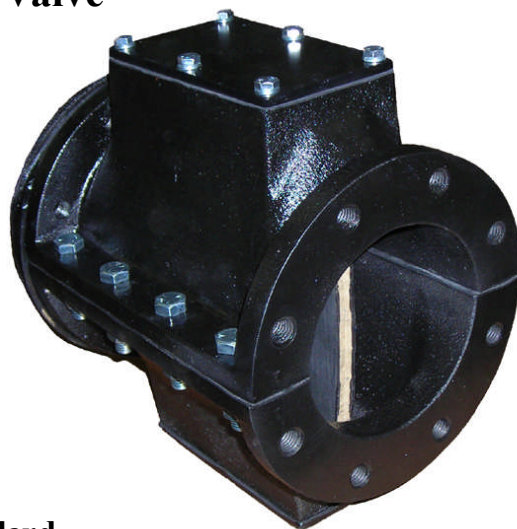


Series DBMJ

Fully Enclosed Check Valve

The series DBMJ check valve effectively ensures mono-directional flow of slurries, sewerage, sludge and other hard to handle fluids.

The valve consists of an elastomer duckbill type check valve inside an iron housing. This simple rugged design eliminates the mechanical parts which can wear and jam in conventional check valves. They are available in a variety of elastomer compounds, with a grey iron housing.



All dimensions are in inches. Weights are in lbs.

SIZE	3	4	6	8	10	12
A	11.25	11.50	14.00	19.50	24.50	27.50
B	7.75	9.00	11.50	14.00	19.00	21.50
C1	1.12	1.12	1.12	1.25		
C2	0.75	0.75	0.75	1.00		
D	9.25	12.87	16.00	19.87	23.00	25.00
Wt, lb	50	90	180	260	440	650

Dimensions are subject to change without notice.