

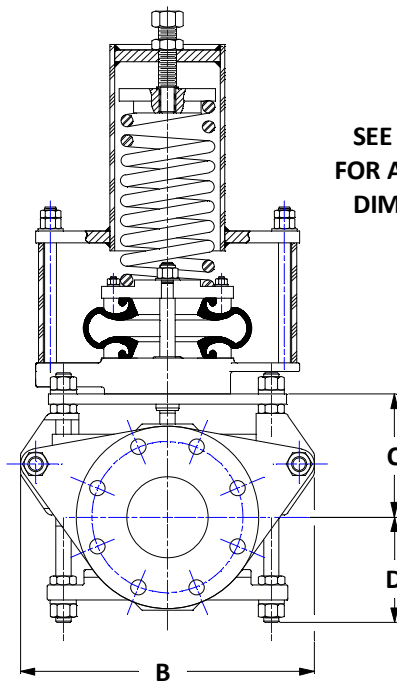
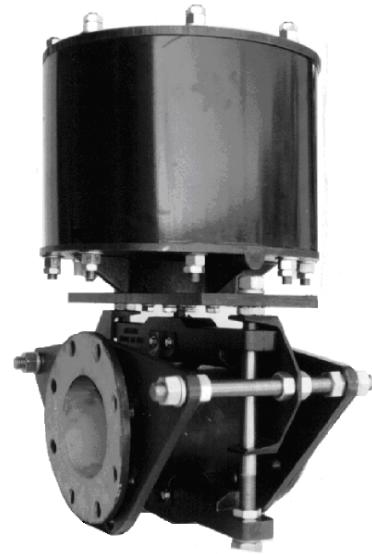
# Series DAO

## Full Round, Dual Pinch, Open Frame Construction, Pneumatically Operated

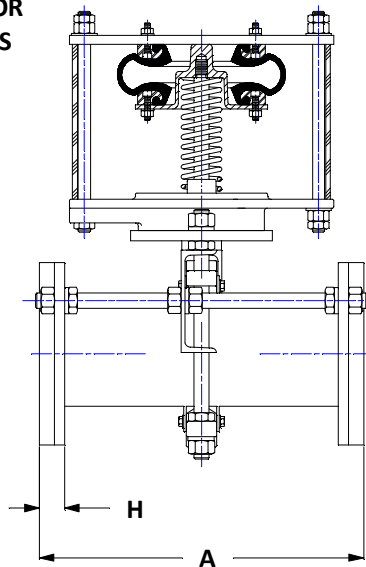
- Available in Full Round or Pre-Pinched construction.
- Light weight
- Low pressure drop
- Drop tight closure
- On/Off or throttling service
- Fail Open or Fail Closed pneumatic actuators

### Specifications:

- Flanges: ANSI STD 125/150 lbs
- Stem & Guide rods: 303 stainless steel



SEE PAGE 12  
FOR ACTUATOR  
DIMENSIONS



### Options:

- Epoxy paint
- Sleeve elastomer
- Valve length
- 316 stainless steel stem
- Positioners
- Solenoid valves
- Limit switches

**Warning !** Open frame valves have no provision for containing process fluid during a sleeve failure; fluid may erupt unexpectedly from the valve. Do not use an open frame valve for fluids that are hot, acidic, flammable or toxic. Otherwise, serious injury may result.

All dimensions are in inches.

SIZE	1	1-1/2	2	2-1/2	3	4	5	6	8	10	12	14	16	18	20
A-S	4.00	4.75	5.25	5.75	6.00	8.00	10.00	10.50	16.00	20.00	24.00	28.00	32.00	36.00	40.00
A-M	5.50	6.00	7.00	7.50	8.00	9.00	15.00	12.00	21.37	26.50	29.00	N/A			
A-L	6.00	6.50	8.00	10.00	12.00	12.00	18.00	18.00	24.00	30.00	36.00	42.00	45.00	54.00	60.00
A-XL	N/A					16.00	20.00	24.00	32.00	40.00	48.00	N/A	48.00	N/A	
B	6.50	7.37	9.25	11.37	11.37	14.50	18.12	21.37	24.25	27.75	33.75	36.00	40.00	43.95	47.25
C	4.94	5.19	5.04	6.12	6.12	8.31	12.48	11.00	15.39	17.46	21.75	23.38	31.25	26.56	30.87
D	2.75	2.71	3.21	3.50	3.75	5.18	6.84	5.50	8.18	9.25	11.37	12.25	16.67	12.50	16.67
H	.81	.53	.62	1.06	1.12	1.25	1.50	1.50	1.12	1.25	1.50	1.75	2.00	2.00	2.75
P Max	150 psi				100 psi				75 psi				50 psi		
Wt, Lb.	15	16	30	35	47	75	100	130	180	300	420	540	980	1,100	1,200

# PNEUMATIC ACTUATORS

---

## Pneumatic Fail Open and Fail Closed Actuators

- No Lubrication Required
- No piston Rings to Replace, Ever.
- No Wiper Rings
- Fail Safe Spring Return Operation
- Low Friction
- Zero Leakage
- Low Air Consumption
- On / Off or Modulating Service
- Rugged Cast Iron Base
- 303 Stainless Steel Stem
- PVC Cover Tube

These actuators provide outstanding performance in harsh environments. They are available in seven different sizes to match valve thrust and stroke requirements.

**Construction:** The heart of the Onyx actuator is a Firestone Air-Stroke® rubber suspension bag and spring. These air bags are typically used as suspension elements in trucks and buses, with a track record of years of dependable service under adverse conditions. Combining an air bag actuator with a spring provides simple, rugged, dependable actuation.

### DURABLE FOR LONG LIFE

Airstroke actuators are a further application of Firestone's time proven Airide springs for truck and bus suspensions. Long life and durability proven in millions of miles of heavy-duty suspension use under adverse environmental conditions.

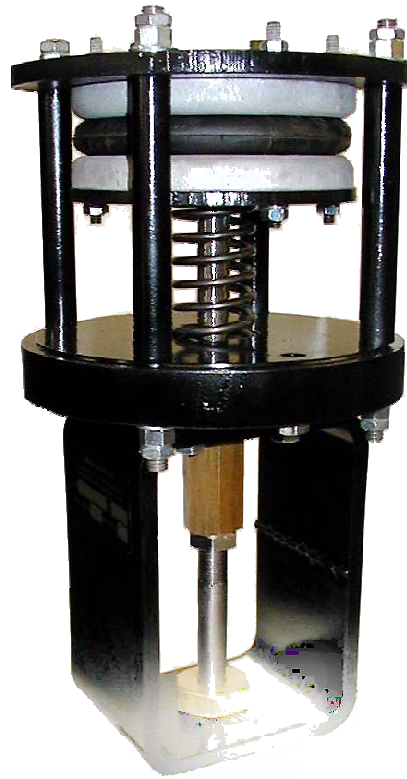
### NO MAINTENANCE OR LUBRICATION REQUIRED

### NO PISTON

Airstroke actuators have no piston or sliding seals. This allows for the design of Airstroke actuators into applications where dirt or grit would destroy the seals on conventional cylinders.

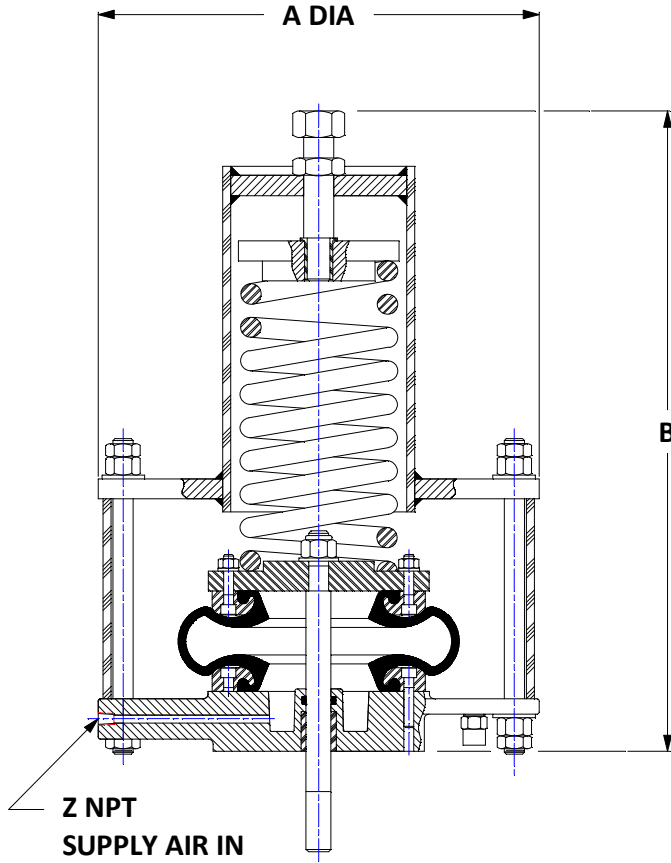
### FRICTION FREE FOR IMMEDIATE RESPONSE

Since Airstroke actuators have no sliding seals, there is no breakaway friction as with conventional cylinders, making them ideally suited for operation with modulating positioners.

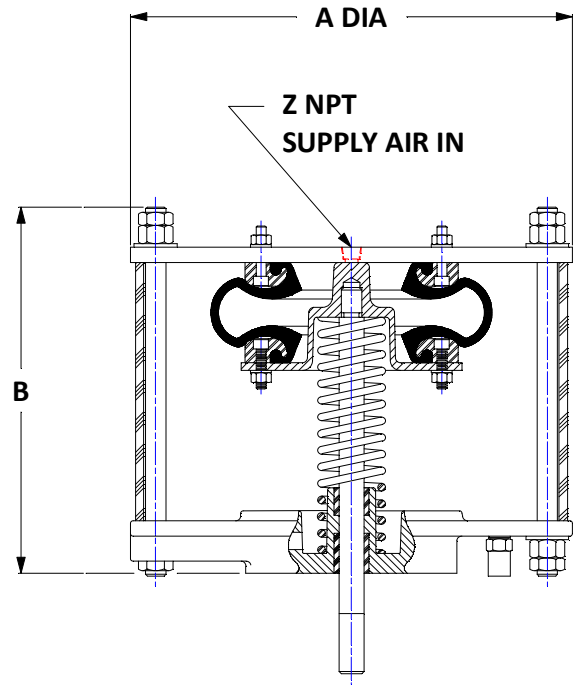


# PFO & PFC ACTUATORS

ACTUATOR WEIGHTS AND DIMENSIONS  
( All dimensions are in inches and weights are in lbs.)



**PFC ACTUATOR**



**PFO ACTUATOR**

SIZE	8	12	21	30	36	40	70	80	120	200
A DIA	7.50	11.00	11.18	13.56	14.74	19.06	16.37	19.75	23.68	31.75
B (PFC)	10.37	22.12	27.37	34.62	37.12	62.37	50.12	52.62	59.50	N/A
B (PFO)	7.15	9.12	11.00	13.00	16.25		18.50	18.50	24.50	34.93
Z NPT	1/4				3/8		1/2			
WEIGHT (PFC)	25	45	70	156	226	300	355	385	450	N/A
WEIGHT (PFO)	20	40	46	75	119	130	140	145	200	880